

CHAIRMAN'S GAVEL PASSED TO RICH WATSON



Rich Watson, Senior Vice President Chief Operations Executive of TheBANK of Edwardsville cheerfully accepted the Chairmanship of the RHSFS board on Monday, May 19.

"I am impressed by this organization and the talent its employees have," he said. "The

agency is strong but not without its share of issues. I look forward to the challenge of working through them with the board and staff."

Watson has served on the RHSFS board since 2001 and has served as Vice Chairman since 2006. In an October 2006 interview for Riverbend Connections he said, "It's exciting to know that we are part of a child's early development and that we are giving them a better chance at putting their best foot forward in this world."

TheBANK of Edwardsville has built a long tradition of community support. In its 140 years in operation, it has done everything from having floats in parades to sponsoring events for organizations throughout Madison and St. Clair counties. TheBANK has earned a reputa-

tion for being the "People you Know and Trust" through its partnerships with organizations like RHSFS.

Watson said, "What better way to give back to the community than by supporting organizations that work to improve the lives of our children and families and to strengthen our shared, local economy?" He also believes that when people invest in RHSFS, they invest in the workforce of today and tomorrow, fortifying our local economy.

Watson is committed to seeing this agency succeed and become the place people think of when their family is in need.

Watson replaced Gay Bryant whose two-year term as Chairperson ended. Bryant will remain an active member of the board of directors.

Watch your mailbox for your invitation to the RHSFS spring fundraiser, Circle of Care.

LEADING LADY - Helping to bring Families Center Stage

Honoring **DIANA ENLOE**

APRIL 2008

An Evening of Entertainment, Education and Empowerment

2008 Circle of Care
June 10, 2008

A Benefit for:

**RIVERBEND
HEAD START**
& Family Services

FAMILY FOUNDATIONS...continued from page 1

ISBE also dictates that quality family strengthening programs should have a children's book and toy lending library. "Enabling families to borrow these from a lending library in our new space will increase child development activity in the homes of our clients," said Sandy Kelley, Program Director.

"The work we do through home visits is achieving our mission," she continued, "but many of our families are isolated due to a lack of transportation and low-income. They welcome the opportunity to engage in activities and learning experiences with other families. Now we can provide that family strengthening activity as well."

Riverbend Head Start & Family Services
550 Landmarks Blvd. - P.O. Box 250
Alton, IL 62002
618.463.5946 www.riverbendfamilies.org

EDWARDSVILLE SUPPORTS LITERACY THROUGH HEAD START

BORDERS



What would you do with 30 boxes of new books?

Edwardsville Head Start preschoolers will read theirs.

A spring book fair by Borders netted the center hundreds of children's books for its pre-school classroom, parenting books, professional development books for staff, and resource books for Head Start parents to use to find solutions to life's challenges.

So successful, Borders wants to do it again this August, and this time, up the ante. Books will be raised for all six Head Start centers.

Customers of Borders will see displays of books on the centers' wish lists throughout the store. Signs will encourage them to buy a book to donate.

Books for children and families to use for learning to read, write or improve their lives is a step toward a stronger community. This partnership between Borders and RHSFS connects customers to a solution for a need, and makes it easy to do.

Please encourage friends and family to shop at Borders during August and support our families.

FAMILY FOUNDATIONS TAKES ON NEW CHALLENGES

Family Foundations has acquired space to provide parent education, socialization and child development resources to its families. Now, with its own meeting space at 1800 E. Broadway in Alton, next to the Essie Robinson Head Start, the program can focus on consistent parent group meetings covering subjects that parents desire and need most to strengthen their families.

Elizabeth Frisbie, a mental health specialist expert at working with high-risk parents, has been booked to talk about child behavior management. Case Manager Loretta Renken will teach the effective 1-2-3 Magic method of child discipline that encourages communica-

tion and discourages corporal punishment.

The Illinois State Board of Education (ISBE), Family Foundations funding source, maintains that family strengthening programs should connect families to concrete supports in times of need through a parent resource lending library. A library in the new space will aid parents seeking information on problem-solving, parenting and pursuing a higher education.

continued on back page



RHSFS staff member, Connie Carroll stands in Family Foundations new parent meeting room next door to Essie Robinson Head Start in Alton. The program acquired new space to expand its parent group and socialization activities.

JUNE DATES TO REMEMBER

RHSFS Employee Birthdays

1 Marquette Edwards
3 Tabitha Curran
5 Clara Vaughn
6 Chuck Parr
7 Sandy Kelley
7 Georgia Stryffeler
8 Cynthia Hueter
13 Loretta Renken
19 Valerie Freeman
19 Nannette Johnson
20 Veneta Wadlow
25 Sara Cooke
30 Debra Harrington

Special Days

1 National Cancer Survivors Day
1 Oscar the Grouch's birthday
6 Hunger Awareness Day
10 RHSFS Circle of Care Banquet
12 Diary Day
14 Flag Day
15 Father's Day
15 Power of a Smile Day
17 Father's Day
19 Juneteenth
21 Summer Solstice
26 Baseball Day
26 Toothbrush invented in 1498
27 HIV Testing Day

Special Weeks

Week 1
Fishing Week
Week 2
Bathroom Reading Week
Hug Week
Men's Health Week
Week 4
Eye Safety Awareness Week
Helen Keller Deaf-Blind Awareness Week
Sobriety Checkpoint Week (National)

Month-Long Observances

Dairy Month
Flag Month
Fresh Fruit and Vegetable Month
Safety Month
Zoo and Aquarium Month



JUNETEENTH.com
WORLD WIDE CELEBRATION!

Juneteenth is the oldest nationally celebrated commemoration of the ending of slavery in the United States.

From its Galveston, Texas origin in 1865, the observance of June 19th as the African American Emancipation Day has spread across the United States and beyond.

Today Juneteenth commemorates African American freedom and emphasizes education and achievement. It is a day, a week, and in some areas a month

marked with celebrations, guest speakers, picnics and family gatherings.

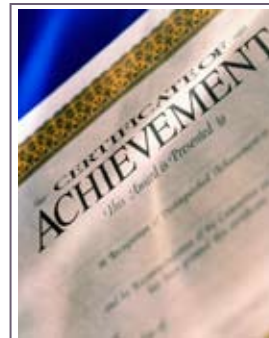
It is a time for reflection and rejoicing. It is a time for assessment, self-improvement and for planning the future.

Its growing popularity signifies a level of maturity and dignity in America long over due. In cities across the country, people of all races, nationalities and religions are joining hands to truthfully acknowledge a period in our history that shaped and con-

tinues to influence our society today.

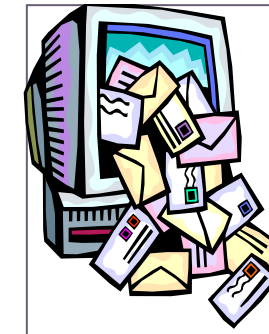
Sensitized to the conditions and experiences of others, only then can we make significant and lasting improvements in our society.

Reprinted from www.juneteenth.com



HR REMINDER

Please forward a copy of your certificates or other documentation of your attendance at any professional development activity. HR will keep it in your file for our required documentation. Thanks!



IS REMINDER

Please empty your Microsoft Outlook Inbox, Sent Items and Outbox folders if you don't need the emails. Especially those with attachments. They require a lot of space on the agency's server and slow down the back-up of data process. In fact, recently, we haven't been able to back-up completely, which puts your data at-risk of being lost.



Southwestern Illinois College



Class of 2008

HERE COME THE GRADS

Lisa McKee, Granite City South Teacher Assistant, and Kristina Pearson, Granite City North Substitute Teacher Assistant, graduated with high honors from Southwestern Illinois College in May. They both earned an Associate degree in Applied Science with a major in Early Childhood Education. They both plan to become Head Start Teachers.

CONGRATULATIONS LISA AND KRISTINA!

BANQUET...continued from page 2

The speaker for the evening was Dr. Stephen Hupp, from the Department of Psychology at SIUE. He shared his wisdom and adventures in parenting. (Yes, he's the same guy who spoke to staff at the Pulaski Day In-Service on March 3.)

Door prizes solicited by Policy Council members were given away. Prizes included gift certificates to local restaurants, Family Fun packs for bowling, a car wash package and tickets to Gateway Grizzlies ball games.

Special thanks go out again this year to the "Creative Director", Kim Vinyard, for her hours of bringing Camelot to life in the form of a castle. The castle helped to create the mood and served as a great backdrop for photo ops. Kim's "orange" side comes in very handy this time of year. Great job, Kim!

A "Thank You" also goes out to:

Debby Edelman for being on hand to take and print photos.

Gene for his assistance in constructing the castle, his flexibility in regards to the PO's and his 'gentle' nudging about printing.

Sharon, Nancy, Dora, and Ruth for administrative – and technology! – support.

MSW intern, Meagan for her help with printing, set-up and sign-in.

Anita for her generosity regarding staff attendance.

All staff who tracked volunteer hours, shared the names of the qualifying volunteers, encouraged parents attendance.

Staff who attended the banquet, thank you for taking time out of your personal time and busy schedules to come support the parents/volunteers. It is often not hard to miss the relief in a parent's face when they recognize a familiar face and can share a table with someone they know.

To everyone who offered encouragement and support in any form.

To anyone who should have been mentioned – you know who you are...

Thank you, all.

Until next year...

Melanie B.

Family Service/Parent Involvement Specialist